



# Overdale C.P Primary School

## November 2021– Newsletter 3 'Respect, Responsibility, Resilience'

### Welcome back to Term 1.2

**We have overcome many challenges in the last half term and we very much look forward to a more settled half term. Staffing was particularly difficult due to the virus causing staff absence and supply teachers not being available. Our part-time teachers worked full time and the senior teachers were teaching too. Teacher planning time was disrupted across the half term, but by doing this we were able us to keep all our classes open.**

### A huge thank you to the Overdale staff team!

**This is not sustainable going forward, please be assured we will only close classes if we have to. If classes are closed remote learning will be available.**

### Entry into school

We continue to be aware that drop off and collection times are a concern. We are working with the Highways authority and a further review will take place on 2<sup>nd</sup> November.

Longer term the plan still holds for the road outside school to be a bus lane with access to Jazz Court and Overdale school **only** with 20mph speed limit.

The safe access path will be in place and KS1 and KS2 children will use this to access school on an 'open gate' process rather than a controlled access, as the children will be going into the playground (safe BIG space) and lining up to go into classes.

We have made every effort to speed up this process and we have now been told that the work will begin in Dec 2021, rather than Spring 2022, as was the initial time frame. We are pleased with this progress and look forward to having the safe path in place early in the new year.

Once again we ask that parents do not block the turning circle gates as school deliveries and the bin collections use this access.

### Diary Dates

#### Flu vaccinations

#### Catch up Clinic

Thurs 11<sup>th</sup> Nov

Thurs 16<sup>th</sup> Dec

#### Christmas performances

#### EYFS –

Friday 10<sup>th</sup> Dec

10.30am

#### KS1 –

Monday 13<sup>th</sup> Dec

10.30am

#### Carol concert for parents of the choir

Tues 14<sup>th</sup> Dec 2pm

#### INSET DAYS

Tues 4<sup>th</sup> Jan

Mon 28<sup>th</sup> Feb

Mon 2<sup>nd</sup> May

Mon 6<sup>th</sup> June

Mon 25<sup>th</sup> July

#### School photographs

Monday 8<sup>th</sup> Nov

#### Parent consultations

In November days and times to follow

## Entry into school continued

Access will continue to be through the main gate and the Community Hub gate for EYFS. We are going to close the gap between lining up to come into school as the practise is now very quick.

### Into school:

8.40am KS2 (no change) at main gate

8.45am KS1 (5 minutes earlier) at main gate

8.45am EYFS (no change) at Community hub gate

### Exit form school:

3pm KS1 (no change) at main gate.

3pm EYFS (no change) at Community hub gate

3.05pm KS2 (5 minutes earlier) at main gate.

We hope that this will speed up parent waiting time for siblings and allow us to get children into school faster as the weather gets colder. Please understand that we cannot take children into school early if the weather is wet or cold. Teachers meet with their teaching support at 8.30am each day for 10 minutes before the gate opens, this is crucial communication time in preparation for the learning that will follow throughout the day. We have 247 children to make provision for and this is not possible without careful planning. Arriving early at school is not a reason for school to open its doors.

### Speaking to staff at the gate.

We understand that parents may have different views on how the school manage the entrance and exits from school, our plans are agreed with safety of the children as a priority, so we hope you will understand this and work with us. However, if you do have a different opinion we are happy to consider it, you can share this with us by telephone call or school email [office@overdale.n-yorks.sch.uk](mailto:office@overdale.n-yorks.sch.uk)

We will not acknowledge any parent who shouts or yells their thoughts or opinions at staff, at the school gate in front of children. We must all to be good role models for our children.

## Parent visits to school

We are hoping to invite parents from every year group into school to 'look around' our fabulous new building and to see their child's class. We have managed this for Early Years parents and hope to continue the invites throughout the term – staff wellness permitting. Watch for your invite on Dojo's from the class teacher.

## Staffing for January 2022

We will be making changes to our staff provision in (Term 2) January 2022. We have appointed Miss Kirk to teach Y2, the present class has 34 children. The class will be split into two classes of 17 children from January. This will allow the children to close learning gaps and be Key Stage 2 ready in Sept 2022.

Miss Kirk is an experienced Key Stage 1 teacher and we look forward to welcoming her to the Overdale team.

We have also appointed Mr Donald who will work alongside Mr Watson in year 4, initially covering the maternity leave for Mrs Mills, but longer term teaching a class as the school is expanding rapidly towards becoming a two form entry. Mr Donald has worked in both Key Stage 1 and 2 and we look forward to welcoming him into the Overdale team.

These additional appointments will enable our school to offer a nurture provision in the future. Many of our children will benefit from this provision in our lockdown recovery plans.

### Catch up Flu immunisation

These will be held in our community room at Overdale School, on the below dates and times. Children must be accompanied by their parent / carer. To book a slot please ring the clinic team on:

**01423 553115**

Thurs 11<sup>th</sup> November – 3.30 – 5.00pm

Thurs 16<sup>th</sup> December - 3.30pm – 5.00pm

### Parent / Family Learning

This has already begun and it is held on **Thursdays at 9.00am – 11.00am**. This is held at Overdale school in the community room. This will be lots of fun and lots of Christmas arts and crafts. If you would like to join in, please come on Thursdays at 9.00am.

Cake Icing will be starting Tuesday 16<sup>th</sup> November, time to be confirmed.

Please see Mrs Welford-Hall for more details

### Allergens in school.

We are a 'nut aware school'. Please continue to support us by ensuring packed lunches do not contain food items with nuts in. Thank you.



### Festival of Carols

**Sunday 12th December - 2.30pm to 4pm**

Scarborough Methodist Church – PARENTS welcome.

All Bell Ringers and choir members are required to attend. After school rehearsals every Tuesday 3.10pm to 4pm with Miss Dew, both clubs need to attend the after school practises.

### PE Kits

We have many children not bringing PE / games kits into school for these lessons. Fitness is a crucial part of learning and of benefit to wellbeing. **PLEASE** ensure your child has kit in school every week. Bring kit into school on Monday and take it home on Friday is the best plan.

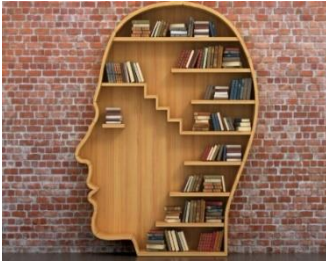
Thank you for your support with this.

## Reading

We are disappointed that less than half our children have any parent entries in their reading Diaries. THANK YOU to all those parents who do read regularly with their children, it truly does make a difference to their progress in reading skills.

Research proves that a child reading 10 minutes daily beyond the school day will progress a year beyond expectations.

Please could all parents read every week with their child going forwards – we would very much appreciate this.



**Respect Values are now agreed with our children. Please see below for the Vision and values at Overdale CPS**

**A respectful, responsible and resilient learning community.**

### READERS

Working together to ensure EVERY CHILD IS A READER. **Year 2**

### ENGAGE

Taking part in all school life has to offer with a positive attitude. **All classes**

### SUPPORT

Giving your skills to support others and asking for support when you need it. **Year 5**

### PERSEVERE

Strive to achieve the best you can in all areas of school life, even when it is changing. **Year 5**

### ENCOURAGE

Always give support and encouragement to each other. **Year 6**

### CREATIVE

Developing an imagination where all ideas are valued and celebrated. **Year 5**

### TEAM

Always supporting others to know the importance of telling the truth, to believe in yourself and others to build trust and confidence. **Year 3**

## Parent Consultation meetings

We hope to host these on school site shortly. Covid infection rates are the only reason this would not happen. If we can go ahead onsite, appointments will be put up on Teachers2Parents within two weeks of the half term opening. If we are unable to host them onsite we will arrange a personal telephone call with your child's teacher at an agreed time.



## Christmas Performances

Hopefully we will be able to have full parent audiences, this will be reviewed closer to the time.

For now, please save the dates below and details of tickets will follow nearer the time.

EYFS – Friday 10<sup>th</sup> December 10.30am

KS1 – Monday 13<sup>th</sup> December 10.30am

Carol concert for parents of the choir  
Tues 14<sup>th</sup> Dec 2pm



## Pantomime

We have booked the Snow White Pantomime at Scarborough Spa for whole school on Wednesday 8<sup>th</sup> December – One of our pupils, Lily Saunders will be dancing – we are proud proud of Lily and are excited to see her perform. We wish her lots of luck in her performance.

## Children in Need Nov19th

School council will decide the plan for the day and Mrs Marshall will post their plan on Dojos when it is agreed.





## SCHOOL PHOTOGRAPHS – MONDAY 8<sup>TH</sup> NOVEMBER

Presently we are not allowed siblings on site for this, if we are advised differently before Monday we will let you know by text message. Thank you.



### **Poppy Sales**

The school council will be selling these daily on the playground. We are asking for a silver donation for the poppies and we also have wristbands at £1.00 and snap bookbands for £1.50. All donations go to The Royal British Legion.



If you have any worries, please contact your new teacher or Senior Leader via Dojo's or telephone the school office, the number has not changed 582360.

*All Staff at Overdale School*

	<b>Week 1</b>	<b>Week 2</b>
<b>Monday</b>	Beef burger in a bun Diced Potatoes Peas & Carrots ~~ Fresh Fruit/Yoghurt	Cheese & Tomato Pizza Diced Potatoes Sweetcorn & Green Beans ~~ Fresh Fruit/Yoghurt
<b>Tuesday</b>	Chicken Korma & Rice Broccoli & Cauliflower Naan Bread ~~ Oat Cookie	Pasta Bolognese Garlic Bread Sweetcorn & Coleslaw ~~ Shortcake
<b>Wednesday</b>	Roast loin of Pork Creamy Mash, Gravy Carrots & Green Beans ~~ Fresh fruit/Yoghurt	Roast Chicken & Stuffing New Potatoes, Gravy Carrots & Broccoli ~~ Treacle Sponge and Custard
<b>Thursday</b>	Minced Beef & Dumplings Roast Potatoes, Peas & Sweetcorn ~~ Chocolate Cake & Custard	Sausage, & Yorkshire Pudding Creamy Mash, Medley of Vegetables ~~~ Fresh fruit/Yoghurt
<b>Friday</b>	Harry Ramsdens Battered Fish & Chips Beans & Sweetcorn Homemade Bread ~~ Chocolate Crispy	Fish Fingers Chips, Peas & Baked Beans Bread ~~ Flapjack
<b>Fresh Fruit and Yoghurt, Jacket Potatoes and a selection of sandwiches and salads available every day.</b>		
<b>Week One</b> W/c Monday 8 <sup>th</sup> November W/c Monday 22 <sup>nd</sup> November W/c Monday 6 <sup>th</sup> December		<b>Week Two</b> W/c Tuesday 2 <sup>nd</sup> November W/c Monday 15 <sup>th</sup> November W/c Monday 29 <sup>th</sup> November Monday 13 <sup>th</sup> December

